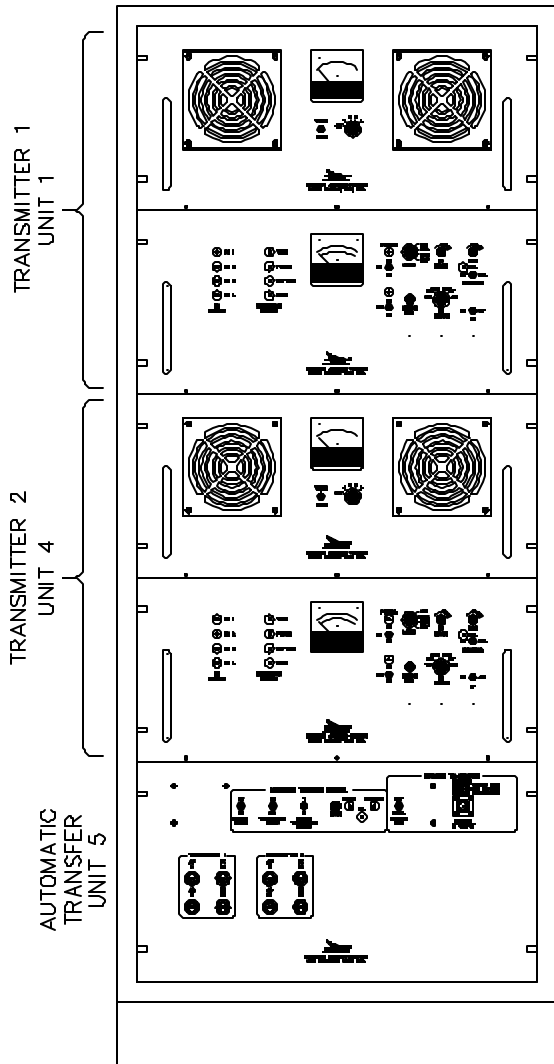
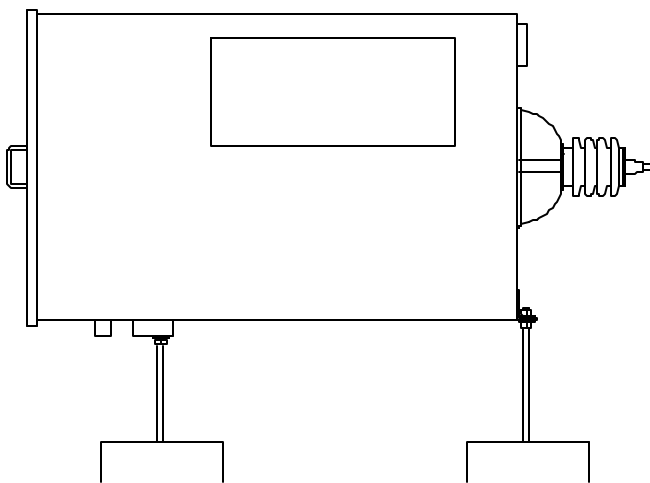




**Southern Avionics<sup>â</sup>  
Company's 1000 Watt Dual Non-  
Directional Radiobeacon.**



SA1000 Dual Transmitter



PC1Kilo Autotuning Antenna Coupler

**SA1000 Specifications:**

**Qualifications:** Meets applicable requirements of ICAO, FCC and FAA.

**Frequency Range:** 190-535 kHz. Synthesized (field programmable), no parts needed.

**Power Output:** 200 to 1000 watts.

**Spurious Emission:** Radiated harmonics are better than 73dB below the 1000 watt carrier.

**Type of Emission:** NON, A2A, A3E (Optional), (GID with optional GPS beacon modulator), or any combination.

**Modulation:** Switching modulator / regulator, 0-95%, internal 400 or 1020 Hz, eight baud Keyer, 7 WPM.

**Noise and Hum Level:** Better than 40dB below 1000 watt carrier.

**Input Power:** 115/230V  $\pm$ 15%, single phase 50 - 60 Hz. or optional 144VDC or both with switch over to batteries. Nominal input power is 1800W at 1000W carrier and keying at 95% modulation.

**Metering:** Power output, reflected power, PA voltage, PA current, percent modulation, audio input level.

**Working Conditions:** Continuous unattended operation, -50° to +70°C, 0-100% noncondensing humidity. Dimensions 48"H, 21"W and 26"D.

**Monitoring:** Automatic shutdown if tone, modulation, power or VSWR drift behind an adjustable level. With a dual system, a shutdown signal initiates a transfer from the primary transmitter to the secondary transmitter.

**PC1Kilo Autotuning Antenna Coupler**

**Input Impedance:** 50 ohms.

**Load Impedance:** 2 to 25 ohms resistance, 700 to 1500 pF capacitance.

**Frequency:** 190 to 625 kHz, with a 700 to 1500 pF load.

**Power Input:** 2000 watts average, 4000 watts peak.

**Metering:** Antenna current, reflected power and tuning. Single meter with a four position switch for OFF, TUNE, HIGH and LOW tuning.

**Tuning:** Large coil with coarse taps, fine tapes and a rotating shorted ring controlled by the autotune system.

**Working Conditions:** Continuous unattended operation, -50° to +70°C, 0-100% noncondensing humidity. Designed for outdoor mounting. Dimensions 50"H, 30"W and 61"D.